

American Association of Port Authorities National Association of Regional Councils

Port – MPO – COG Cross Training

December 4, 2006, Corpus Christi, TX

Jean Godwin

AAPA Executive Vice President

jgodwin@aapa-ports.org

703.684.5700

Fred Abousleman

NARC Policy Director

fred@narc.org

202.986.1032



Alliance of the Ports of Canada, the Caribbean,
Latin America and the United States



NARC

Building Regional Communities

Thanks to:

- Port of San Diego (case study)
- Toledo-Lucas Port Authority (case study)
- Port of Hueneme (panel)
- Port of Tacoma (panel)

- Toledo Metropolitan Area Council of Governments (case study)
- San Diego Association of Governments (case study)
- Delaware Valley Regional Planning Commission (panel)
- Southeast Texas Regional Planning Commission (panel)
- Southern California Association of Governments (panel)

- **AAPA – Sponsorship, Idea, Interest, Attendance!!**
- NARC – staff and members for assistance and interest.



NARC

Building Regional Communities

Agenda

- Overview of MPOs
 - Overview of COGs
 - Why ports and MPOs/COGs should work together?
 - What is NARC?
- Presentations:
- Southern California Association of Governments – Hasan Ikhata
 - Southeast Texas Regional Planning Commission – Robert Dickinson
 - Delaware Valley Regional Planning Commission - Ted Dahlberg



MPOs -

- 480 + MPOs around the country.
- Federally designated under Surface Transportation Law (SAFETEA-LU).
- 50,000 population based on census designation of a metropolitan area.
- 200,000 plus population = a Transportation Management Area (TMA) with different rules, regulations, and funding.
- MPOs designated every 10 years by census.
- May be new ones or old ones split or dissolved based on population (this rarely happens).



NARC

Building Regional Communities

MPOs

- Responsible for:
 - Planning and programming of regionally significant projects.
 - Includes (in general) long range planning, air-quality, congestion, safety, transit, freight, operations, forecasting, and project development.
- Funded through (primarily):
 - An allocation of Planning Funding (PL) Federal \$, Some Surface Transportation Program \$ (STP), Congestion Mitigation and Air Quality \$ (CMAQ), and other local and state sources.



NARC

Building Regional Communities

MPOs

- Overseen by Boards of Locally Elected Officials of jurisdictional constituents (cities, counties, townships, villages, etc.)
 - Boards may be as small or large as the by-laws of each MPO permit.
- Boards may contain others: State DOTs, Transit Operators, etc.



COGs

- Councils of Governments (RPCs/RPOs/etc).
- Over 500 nation wide.
- NOT Federally designated.
- State Legislated, Governor Appointed, or Locally Mandated.
- May be an MPO – or not.
- Usually responsible for regionally collaborative work – Economic Development, Homeland Security Planning, Workforce Development, Aging, etc..



COGs

- May have some authority over transportation decision making.
 - If it is an MPO
 - Or if it has rural transportation planning authority.
 - If it manages other transportation programs –
 - Transit, elderly, disabled.



MPOs/COGs Serve

- Cargo Ports (Los Angeles, San Diego, Seattle, Toledo, Philadelphia)
- Cruise Ports
- River Ports
- Inland Ports (and ports of pre-clearance)



Ports/MPOs/COGs in Discussion



Why work together?

- Align transportation needs.
- Meet regional development goals.
- Foster stronger economic development.
- Focus limited transportation dollars.
- Meet business needs – shipping, trucking, rail, aviation.
- Meet public needs – delivery, congestion relief, air quality.



Security and Safety

- Role of COG/MPO:
 - Regional convener:
 - Local governments, operators, operations, evacuation planning, emergency centers.
 - Get to know your regional partners:
 - Can be an ally and asset.
 - Can help with port planning.
 - Evacuation and emergency management.
 - Communication coordination.



NARC

Building Regional Communities

Funding and Finance Transportation

- How do we fund your needed improvements?
- How do we meet the growing demand for freight and other transportation?
- MPOs and COGs over 10, 20, 50 years
- Private? Public? Mix?
- What is the role of the Federal Government and/or Congress?
- What will be the role of States and local governments?
- The private sector?
 - Private financing?
 - Tolls/smart cards/etc....
 - European model?
 - Wall Street?
- By some estimates we have under-funded our transportation system by **\$1 TRILLION.**



What is NARC?

- Public interest group serving Regional Councils
- Advocate on behalf of Regional Councils for the coordination, planning and delivery of new and existing federal programs on a regional basis
- Promote use of Regional Councils as the forums for inter-jurisdictional decision making
- Traditional Partners: NACo, NLC
 - APWA
 - US Chamber
 - AAPA



NARC

Building Regional Communities

NARC Focus

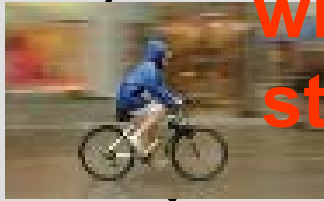
Community and Economic Development	Environment	Homeland Security	Transportation
<ul style="list-style-type: none">❖ EDA❖ Housing❖ Aging❖ Base Closure	<ul style="list-style-type: none">❖ Water Quality❖ Air Quality❖ Brownfields❖ Green Infrastructure and Landcare	<ul style="list-style-type: none">❖ Evacuation Planning❖ Emergency Response	<ul style="list-style-type: none">❖ Highway❖ Transit❖ Rail❖ Aviation❖ Maritime



Regional Integration



NARC believes in regional integration with all types of partners to promote the strongest growth in our rural and urban communities.



Regions 2050

- New NARC Initiative
 - Examining the roles and responsibilities of MPOs and COGs by 2050.
 - Understanding that regions are rapidly changing.
 - How WE want to see them
 - NOT defined by others
 - How will we exist and in what formats?





Thank you!
Questions?



NARC
Building Regional Communities