



**Boundless Collaboration**

**CAPCOG**

# Overview of WebEOC

---

- Server-based software program that is accessible from the internet
- Provides secure, real-time information sharing to help managers make sound decisions quickly
- Can be customized based on local requirements while providing a link between jurisdictions
- Can be used in all phases of emergency management to enhance intra-agency and inter-agency communication during all incidents, regardless of size or complexity



*Powered By ESi University*



# Who's represented on CAPCOG's WebEOC?

---

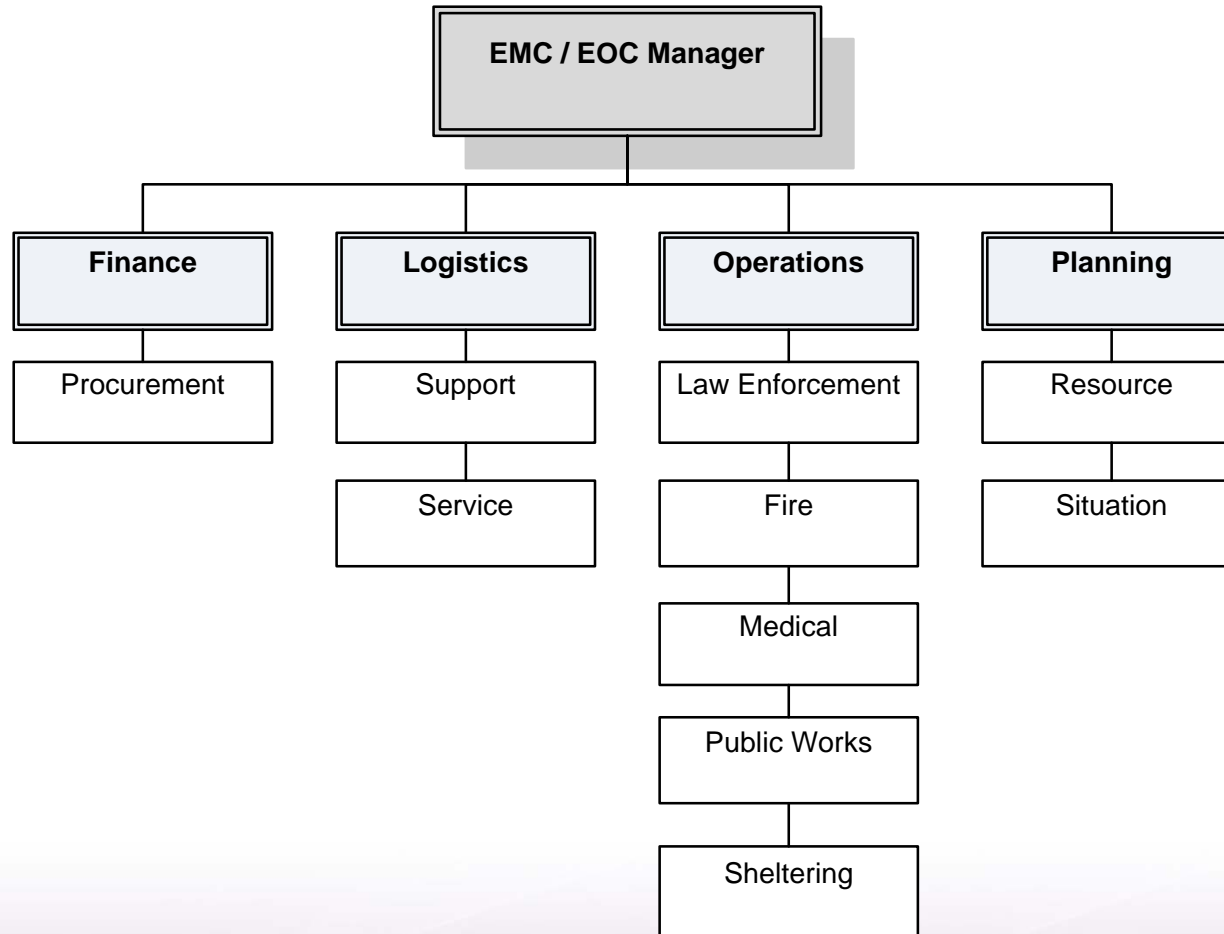
- All political subdivisions
- All hospitals
- All school districts



*Powered By ESi University*

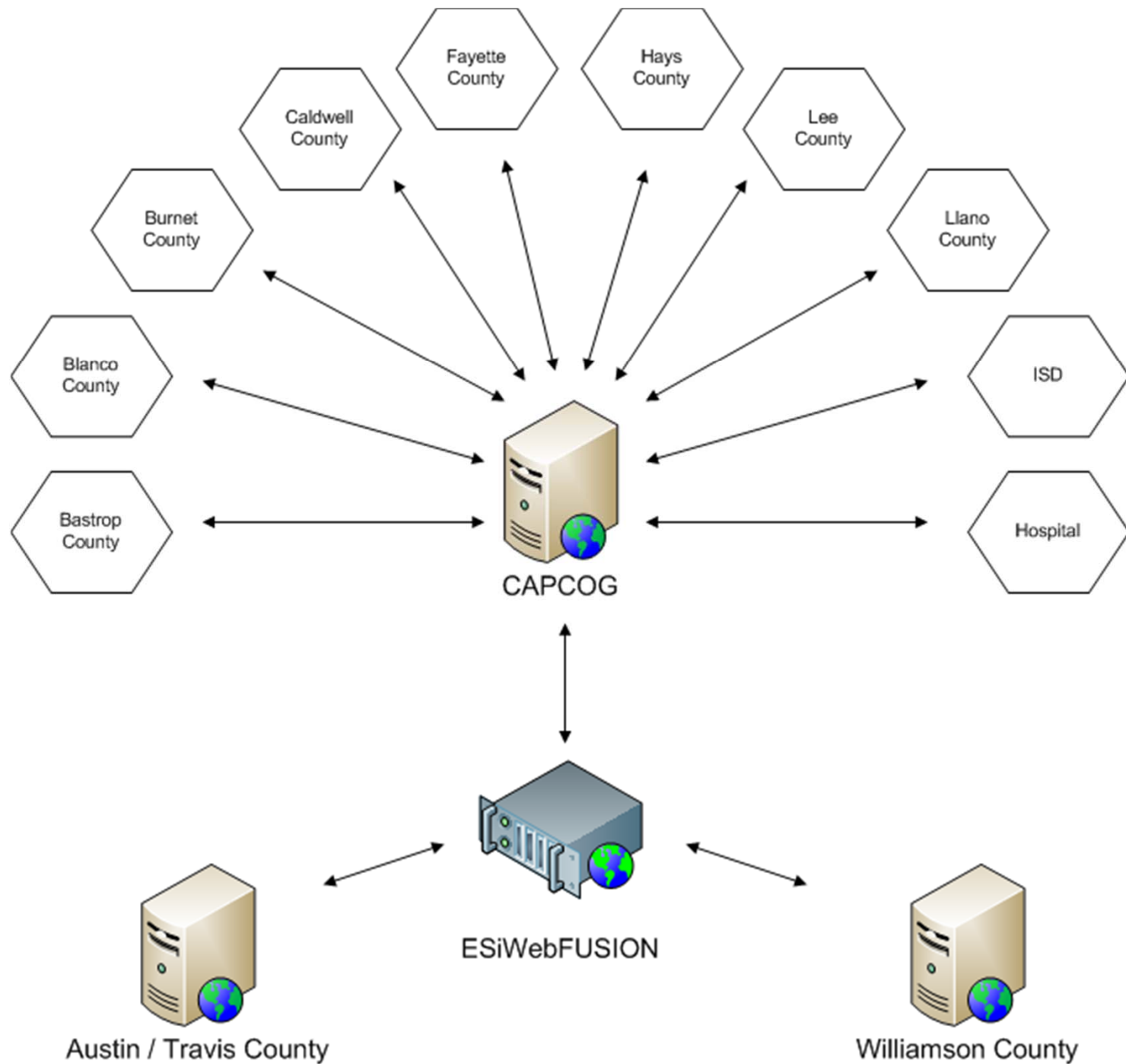


# Positions



*Powered By ESi University*





# CAPCOG Configuration

- Boards / Processes
  - Local
  - Regional
  - Statewide

**Significant Events**  
 UT vs. Wyoming 09/11/2010

**\*Log Entry\***  
 Date/Time: 09/11/2010 22:01:51  
 Position: UT Austin EOC - Meteorologist  
 Name: kimmelroy1401  
 Record: 554

UTPD Command Center weather desk deactivated.  
 NWS Austin San Antonio notified.

CAPCOG Situation Status						
Jurisdiction / Agency	Hazard Event	EOC Activated	Mutual Aid Requested	Local Disaster Declaration	Report	Needs Updating?
Bastrop County	*Routine Conditions*	No	No	No	View	•
Blanco County	*Routine Conditions*	No	No	No	View	•
Burnet County	*Routine Conditions*	No	No	No	View	•
Caldwell County	*Routine Conditions*	No	No	No	View	•
Fayette County	*Routine Conditions*	No	No	No	View	•
Hays County	*Routine Conditions*	No	No	No	View	•
LCRA	Weather - Flooding	No	No	No	View	•
Lee County	*Routine Conditions*	No	No	No	View	•
Llano County	*Routine Conditions*	No	No	No	View	•
Travis County	*Routine Conditions*	No	No	No	View	•
Williamson County	*Routine Conditions*	No	No	No	View	•

Low

Edit/Update/Remove

5 miles of Austin.

Low

Edit/Update/Remove

BE Aid Station. Demand 12 to transport.

refusal.

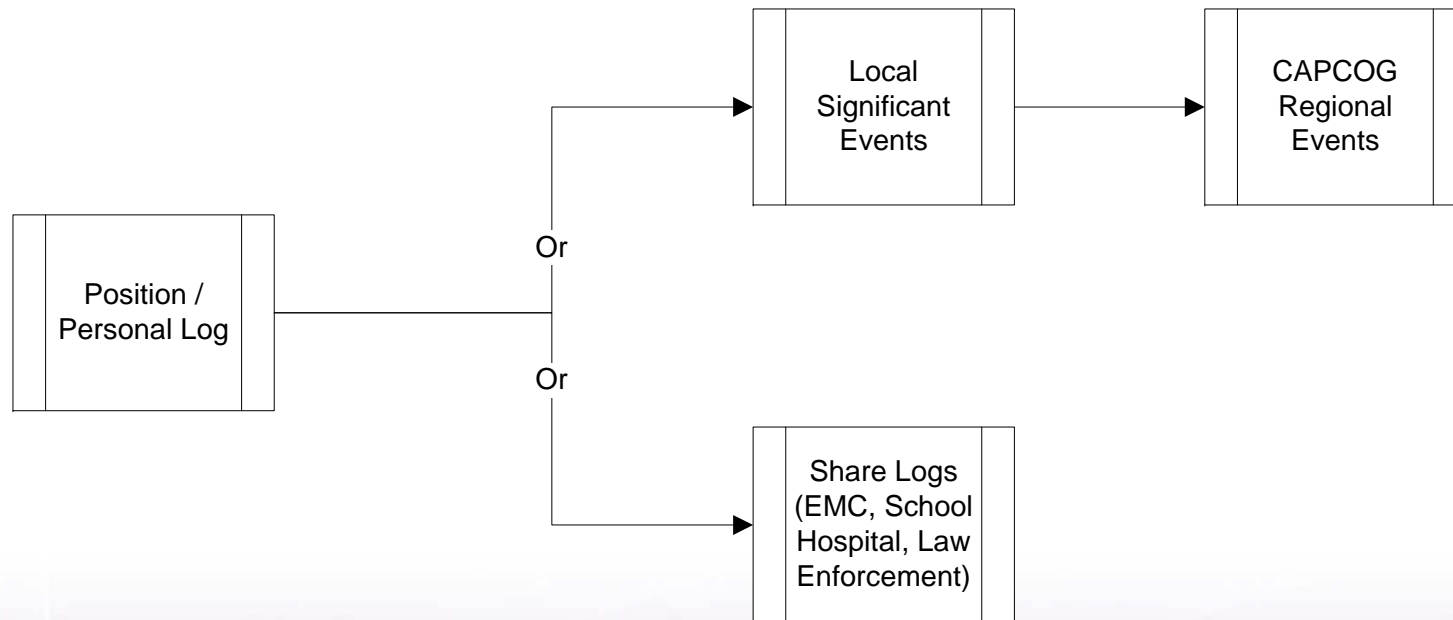


Powered By ESi University



# Local Processes

- Event Reporting
- Requests / Missions
- Press Release



*Powered By ESI University*



# Other Local Boards

---

- Damage Assessment
- Resources and Deployments
- Incident Action Plan
- After Action Report
- ICS / FEMA forms



*Powered By ESi University*



# Regional Boards

---

- CAPCOG Regional Events
- CAPCOG Topical Discussion
- Local Regional Shelter Board
- CAPCOG Situation Status



*Powered By ESi University*



# Statewide Boards / Processes

---

- Resource Requests
- Statewide Significant Events
- Evacuee Tracking
- Hospital Bed Reporting
- Etc.



*Powered By ESi University*



# Contact Information

---

Ed Schaefer

Office: 512-916-6026

Email: [eschaefer@capcog.org](mailto:eschaefer@capcog.org)

Kent Cawley

Office: 512-334-6670

Cell: 512-639-2832

Email: [kcawley@esi911.com](mailto:kcawley@esi911.com)



*Powered By ESi University*



# Proprietary Notice

---

WebEOC® and ESI® are registered trademarks of ESI Acquisition, Inc. insight  
MapTac™ and ESIWebFUSION™ are trademarks of ESI Acquisition, Inc.

Microsoft®, Windows®, and Internet Explorer® are registered trademarks of Microsoft Corporation.  
Mozilla® and Firefox® are registered trademarks of Mozilla Foundation.

All other trademarks are the property of their respective companies.

© 2002-2008 ESI Acquisition, Inc.

All rights reserved. No part of this publication may be used commercially, reproduced, stored in a retrieval system or transmitted, in any form or by any means, mechanical, photocopying, recording or otherwise, without the prior written permission of ESI Acquisition, Inc. While every precaution has been taken in the preparation of this document, ESI assumes no responsibility for errors or omissions. Neither is any liability assumed for damages resulting from the use of the information contained herein.

Printed in USA.



***Powered By ESI University***

