



Chicago Region Environmental and Transportation Efficiency Program

CREATE

Project of National and Regional Significance

NARC Freight Peer-to-Peer Exchange
September 5, 2008



Previous Rail Planning Issues – Catalyst for CREATE

“In 1909, architect Daniel Burnham proposed a single union station (as part of a grand Plan of Chicago) that would consolidate all the railroads into one terminal and make the city a more livable place. It was expensive, controversial, and required the agreement of every railroad — and therefore was not adopted.”

Trains Magazine

CREATE Partners



Illinois Department
of Transportation

CDOT

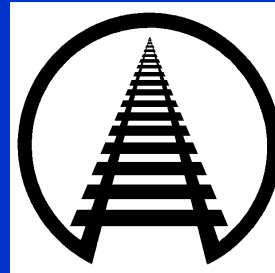
CHICAGO DEPARTMENT OF TRANSPORTATION

Metra[®]



CSX

NS NORFOLK
SOUTHERN



BNSF
RAILWAY



AMTRAK[®]





CREATE Program

- 25 road/rail grade separations
- 6 passenger/freight rail grade separations
- Viaduct improvement program
- Grade crossing safety enhancements
- 47 railroad projects to improve rail infrastructure and upgrade technologies

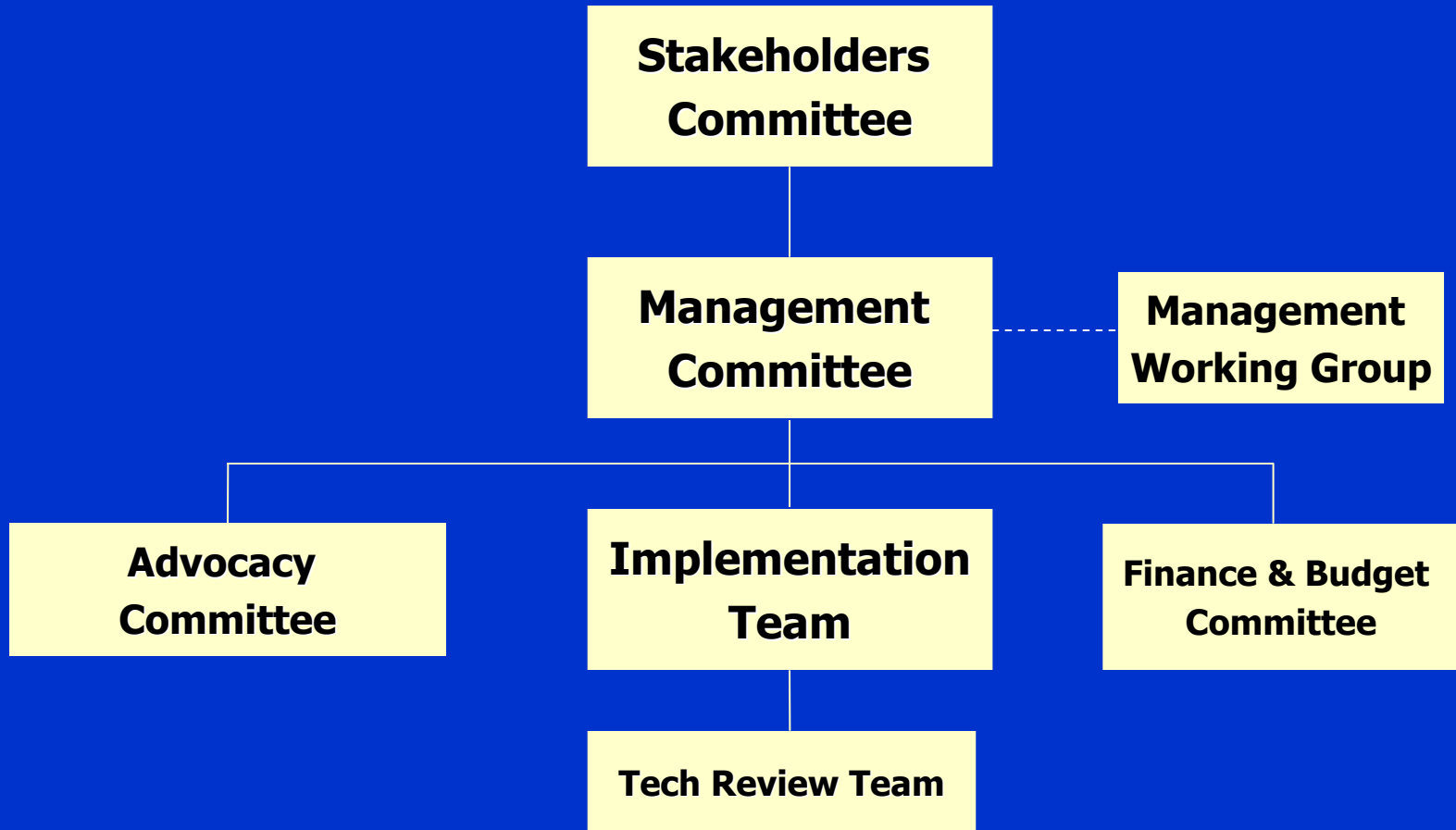


CREATE Program Goals

- Improve efficiency of passenger and freight rail
- Reduce motorist, passenger and freight rail delays
- Reduce highway and rail traffic congestion
- Improve rail-highway grade crossing safety
- Provide national, regional and economic benefits



CREATE Governance





CREATE Advocacy Committee

- Composition
 - IDOT, CDOT, USDOT
 - BNSF, CN, CP, CSX, NS UP, Metra, Amtrak, AAR
- Responsibilities
 - Identify and address community concerns
 - Conduct public outreach and education
 - Develop and execute advocacy plan
 - Monitor program schedule



Civic/Business Stakeholders

- Updates on program status
- Input on current program
- Address policy issues
- Outreach to their members
- Outreach to elected officials
- Meet regularly



Federal Outreach

- US Congressional Outreach
 - Illinois Delegation
 - Committee Members
 - Delegations of those states most affected
- Business Outreach



State of Illinois Outreach

- Legislative champions
- Rail Safety Committee – Springfield and Regional Hearings
 - Program and Project Briefings
- Illinois Association of Railroads
- Advocate for inclusion in Capital Bill
 - February, 2007 – Train Trip to Springfield
 - Civic, municipal, business stakeholders



Regional Outreach

- Metropolitan Mayors Caucus - represents 270+ mayors
- Created a CREATE Task Force
 - Co-Chairs: Mayor Pritchett, Franklin Park & Mayor Peloquin, Blue Island
 - Meet regularly discuss policy, projects and outreach
 - Outreach to their constituents
 - Outreach to other elected officials



Business & Shippers Outreach

- Ongoing Rail Industry participation
- New & Traditional
 - Historic Advocates: Ford, UPS
 - New Advocates: McDonalds, Corn Growers
 - Associations: AAPA, CAGTC
 - Adversaries: CURE, ADM
- Case studies on importance of rail to industry



Website & Newsletter

- Ongoing public information
- Created Listserv
- Spring & Fall newsletter
- Update on project status, media, outreach opportunities, etc.

The screenshot shows a Windows Internet Explorer browser window displaying the CREATE website. The address bar shows the URL <http://www.createprogram.org/>. The browser's menu bar includes File, Edit, View, Favorites, Tools, and Help. The toolbar contains various icons for navigation and utility. The website content includes a header for the Chicago Region Environmental and Transportation Efficiency Program, a navigation menu with links to Home, About CREATE, CREATE Projects, News and Events, FAQ, Press Room, and Contact Us. The main content area features a section titled "New CREATE links" with several hyperlinks: [Employment Opportunities](#), [Doing Business with CREATE](#), and [Sign Up for CREATE Updates & Event Notifications](#). A paragraph of text describes the CREATE program as a first-of-its-kind partnership between U.S. DOT, the State of Illinois, City of Chicago, Metra, Amtrak, and the nation's freight railroads. It mentions that the program is designed to provide information about the program and its benefits to Chicago-area residents. A list of program goals is provided, including: Reduce rail and motorist congestion, Improve passenger rail service, Enhance public safety, Promote economic development, Create jobs, and Improve air quality. On the right side, there are two more links: [CREATE statement on The National Surface Transportation and Revenue Study Commission's Report to Congress](#) and [CREATE Statement on Proposed CN Acquisition of EJ&E](#). A final link at the bottom right says [Click to download a copy of the FINAL CREATE Feasibility Study](#). The browser's status bar at the bottom shows the Start button, several open applications (New Memo - IBM Lotu..., BB_FHWA_FINAL_Au..., Microsoft PowerPoint..., William McKee/camsys...), and the CREATE - Windows... window. The system tray on the right shows the Internet icon, a 100% zoom level, and the system clock displaying 10:41 AM on 10/4/04.



Obstacles & Solutions

- Understanding freight movement
 - General Public
 - Legislators
- Chose more personal issues
 - Passenger Rail Transit
 - Environmental
 - Safety
 - Jobs



Passenger Rail

Metra

- Riders take 80 million trips per year
- 17 CREATE projects benefit Metra
- Freight/Passenger Service conflicts eliminated at flyover locations

Amtrak

- 3 million Amtrak passengers to or from Chicago a year
- Freight rail capacity impacts Amtrak reliability
- 13 CREATE projects benefit Amtrak





Freight Rail Environmental Benefits

- Emissions Reductions
- Energy Conservation
- Most Environmentally Friendly Mode
- Congestion Reduction



Safety

- Highway/Rail conflicts eliminated
- Passenger/Freight rail conflicts eliminated
- 911 Critical Crossings
- Rail mode transport



Jobs

- 18,600 jobs in Illinois
- 7,000 direct jobs in Chicago area
 - 38,000 rail related jobs
- \$1.7 billion in annual wages
- Average rail worker salary = \$68,600 + benefits
- 47% in N.E. Illinois are people of color

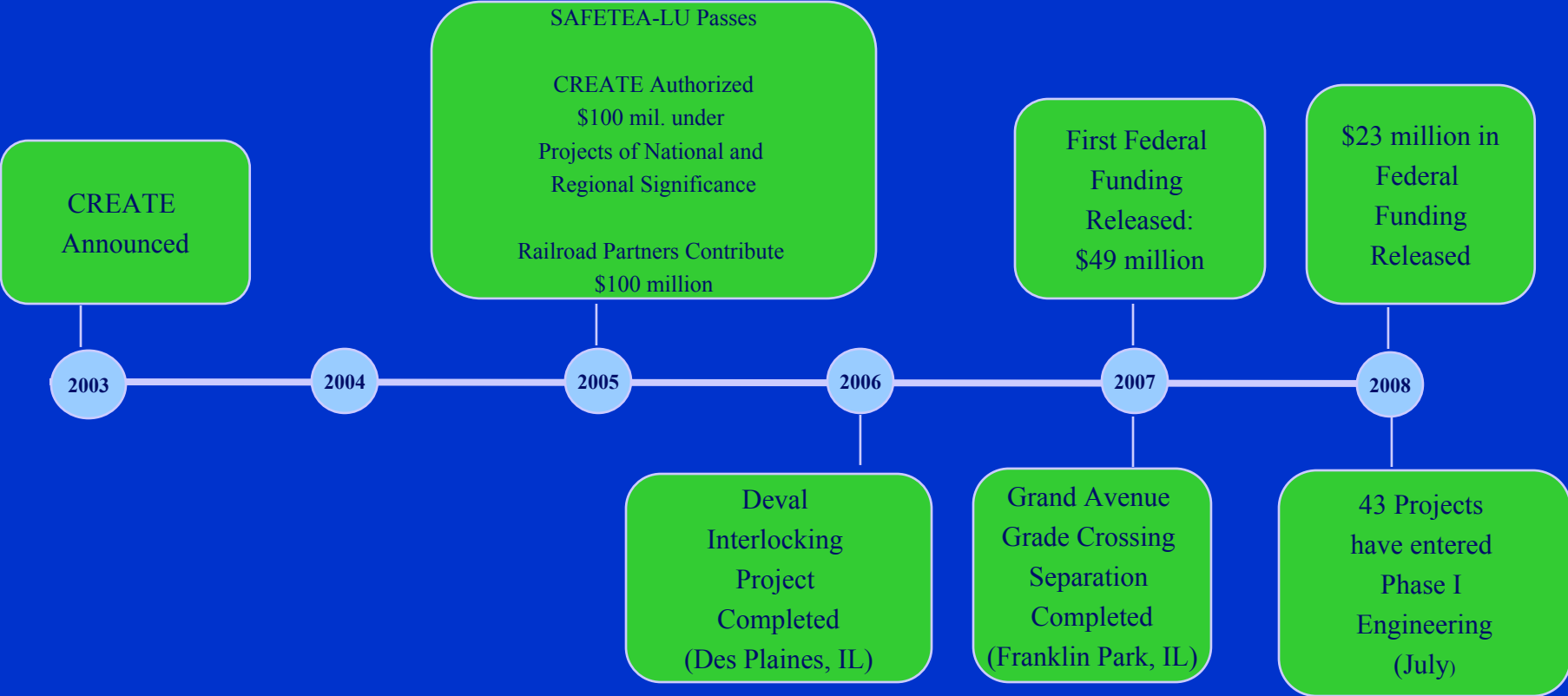


Human Resources/Procurement

- HR and Procurement Summits
- Helmets to Hardhats - Veterans
 - 3 completed in 1st half of 2008
 - Training/support on RR online application process
- “Doing Business with CREATE”
 - Procurement ListServ



CREATE Draft Timeline





2 CREATE/1 pre-CREATE Projects Completed



Deval Tower, Des Plaines



Grand Avenue Grade Crossing,
Franklin Park



Brighton Park Interlocking,
Chicago



CREATE Next Steps

- Continue moving projects to construction
- Participate actively in national debate on freight policy
 - Engage the shipper & business communities
- Seek additional CREATE funding in next Federal Transportation Authorization





Chicago Region Environmental and Transportation Efficiency Program

CREATE

Project of National and Regional Significance

NARC Freight Peer-to-Peer Exchange
September 5, 2008