



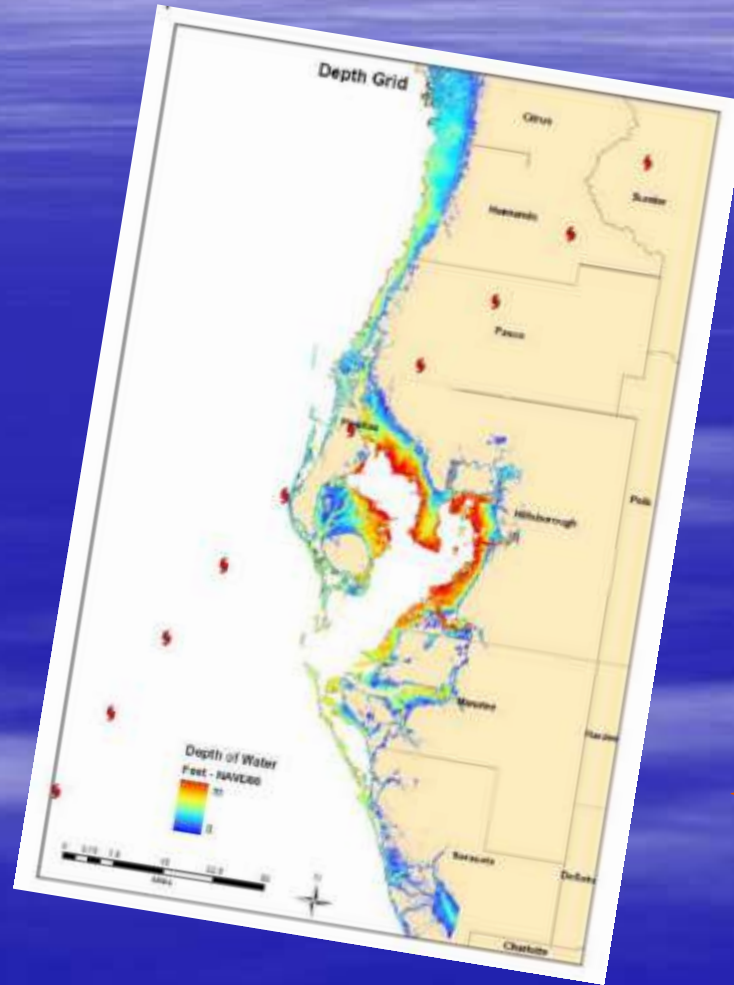
The Tampa Bay Catastrophic Plan

*Presentation to NARC Homeland Security
Open Session and Committee Meeting*

Manny L. Pumariega, Executive Director
June 15, 2010

Defining the “Region”

- RDSTF Region
 - Citrus
 - Sumter
 - Hernando
 - Pasco
 - Pinellas
 - Hillsborough
 - Hardee
 - Polk
- Manatee



The Scenario



Hurricane *Phoenix*

- The SLOSH Run
 - New SLOSH basin
 - Large, category 5 Hurricane on a NE track hitting north of the mouth of the bay
 - Maximize storm surge in bay and along the coast
 - Maximize impact of severe winds to all 9 counties

The Impacts



- Using HAZUS to determine impacts
 - Structures impacted (# and %)
 - Debris
 - Critical Facilities
 - Hospitals, Nursing homes, EOCs, Fire and Police stations
 - Critical Infrastructure
 - Water, Waste Water
 - Power and Communications
 - Transportation
 - Fuel

Social & Economic Impacts

- Impact to Employees
 - including responders and critical employees
- Health Care System
- Additional Economic Impacts
 - Work Place Damage and Business Interruption
 - Workforce
 - Loss of Key Assets: Ports, Airports
 - Impacts to tourism, agriculture



Work Groups

- Emergency Management
- Emergency Response
- Critical Infrastructure/
Public Works
- Public Information
- Disaster Housing
- Economic Restoration
- Animal Issues
- Humans Services
- Health and Medical
- Environmental
Restoration

Emergency Management

- Coordination of Response
- Rapid Impact Assessment
 - Use of Technology
 - GIS,
 - Satellite
 - Federal / Military Assets
- Resource Requests and Priority



Emergency Response

- Search and Rescue
- Security
- Hazardous Materials
- Fire Fighting



Critical Infrastructure/ Public Works

- Power!
- Communications
- Water/ Waste Water
- Transportation including Ports, Airports, transit, causeways, bridges, etc.
- Critical Facilities



Public Information

- Crisis Messaging
- Coordination & Consistency
- Media
- Joint Information Center (JIC)



Disaster Housing

- Host Sheltering
- Mass Care Shelters
- Transient Housing
- FEMA Trailers & Alternative Housing Program



Economic Restoration



- Economic restoration contingent upon:
 - COOP Planning; i.e. Business Preparedness
 - Resumption of Power, communications and utilities
 - Strategy/ Priority of Major Economic Generators
 - “Private Dollars follow Public Investment”

Animal Issues

- Pets & Large Animals
- Care of lost/abandoned
- Reunification or Adoption
- Disposal of carcasses
- Public Health issues



Human Services

- Mass Care (shelters)
- Counseling
- Continuity of Social Services
- Assistance with unmet needs
- Volunteers and Donations



Health and Medical

- Immediate Emergency Needs - Surge
- Loss of Facilities (Hospitals, NH, ALFs)
- Continuity of Care (Home Health Care)
- Loss of Power (Electric dependent medical supplies)
- Public Health Issues (water contamination, debris, varmints, etc.)
- Trauma



Environmental Restoration

- Recognition that the environment is linked not just to habitat and recreation but to public health and the economy.
 - Beaches
 - Estuaries
 - Habitat and Wildlife

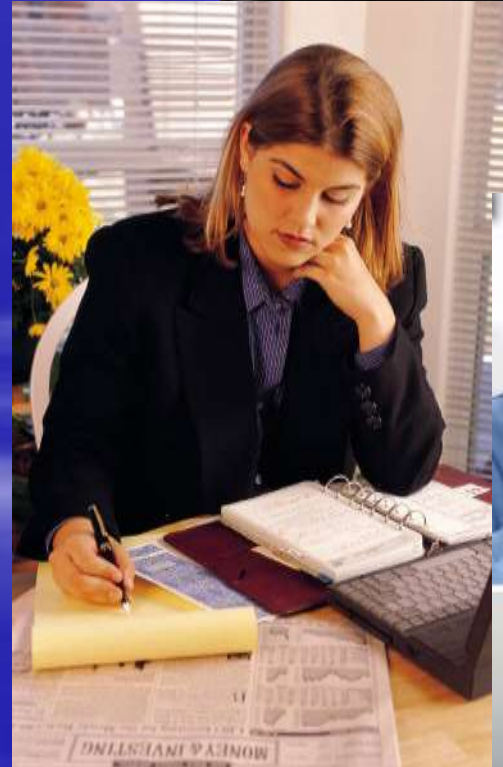


Catastrophic Planning

- Regional Planning
 - Resources & Priorities
 - Coordination
 - Gaps!
- Consistency
- Recognizing State and Local Roles
- Recognizing Other Critical Partners including the Private Sector
- Innovation

Web-based Exercise

- July 27, 2010
- Functional Areas
 1. Disaster Housing
 2. Public Information
 3. Volunteers & Donations
 4. Economic Restoration
 5. Rapid Impact Assessment?



For More Information

Manny L. Pumariega, AICP
Executive Director
or

Betti C. Johnson, AICP
Emergency Management

Tampa Bay Regional Planning Council
4000 Gateway Centre Blvd., Suite 100
Pinellas Park, FL 33782

www.tampabaycatplan.org

Betti@tbrpc.org
manny@tbrpc.org

