

Regional Planning and Federal Funding

Michael McLaughlin

Director of Regional Planning and Transportation
Metropolitan Planning Council

Since 1934, MPC is a nonprofit, nonpartisan group of business and civic leaders committed to serving the public interest through development, promotion and implementation of sound planning and development policies so all residents have access to opportunity and a good quality of life, the building blocks of a globally competitive greater Chicago region.



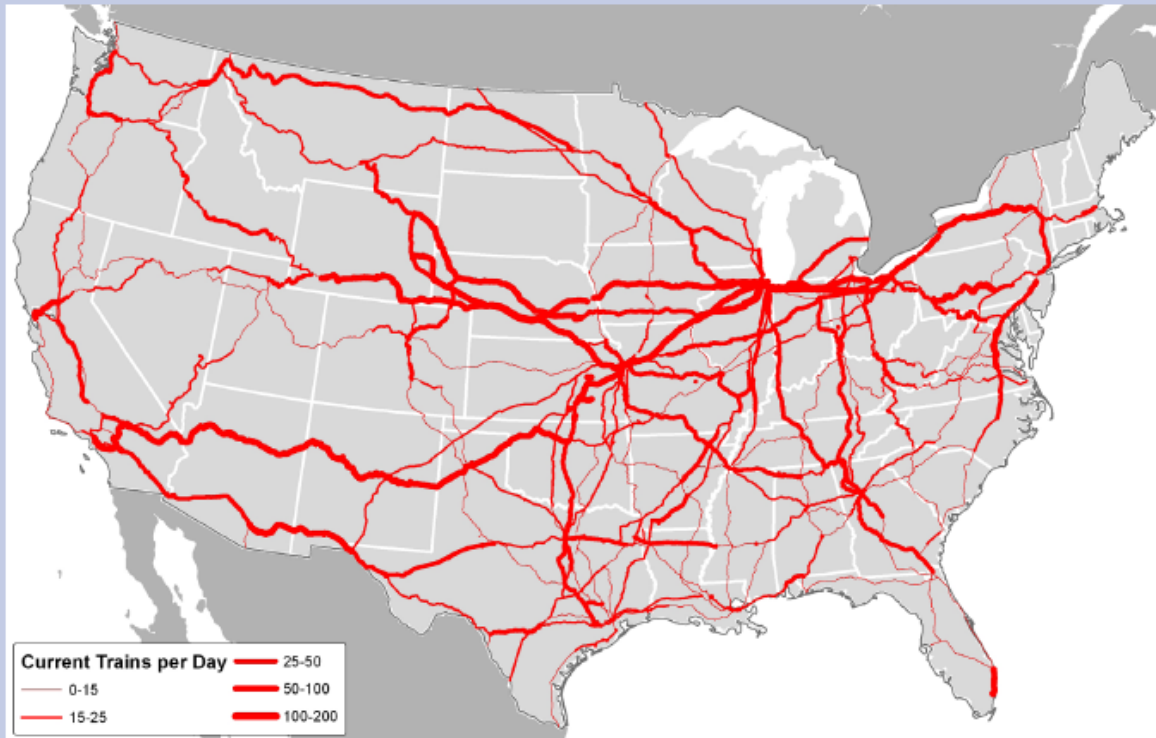
US Freight Traffic – 2000

Source: Reebie Associates' TRANSEARCH and U.S. DOT Freight Analysis Framework Project



Train Traffic Heavy in Corridors

Exhibit 3-5. Train traffic on the U.S. freight rail network

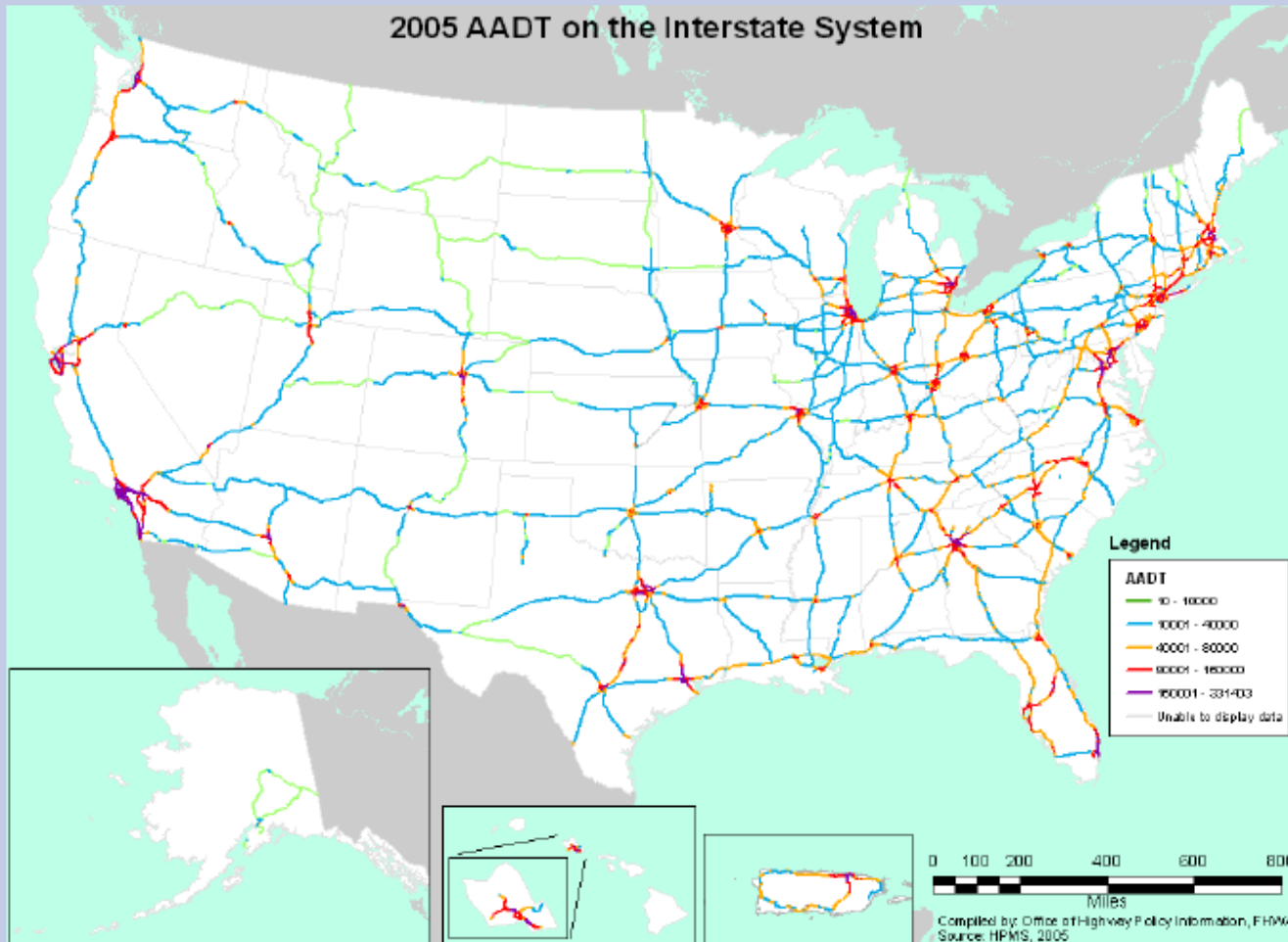


The map shows average daily freight and passenger train traffic on routes operated by major freight railroads in the United States.

Source: Association of American Railroads

Total Vehicle Traffic Flow Mirrors Freight Traffic

Exhibit 3-1. Average daily traffic volumes on the Interstate Highway System



The map shows average daily traffic volumes on the Interstate Highway System. High traffic volume routes are concentrated in and around major cities, while traffic volumes in rural areas are much lower.

SAFETEA-LU

- Safe, Accountable, Flexible, Efficient
Transportation Equity Act – A Legacy for Users
- Passed Congress in July, 2005
- “6-year” highway and transportation bill
 - But almost two years had passed
- \$286.4 billion package
- Funded by gas taxes

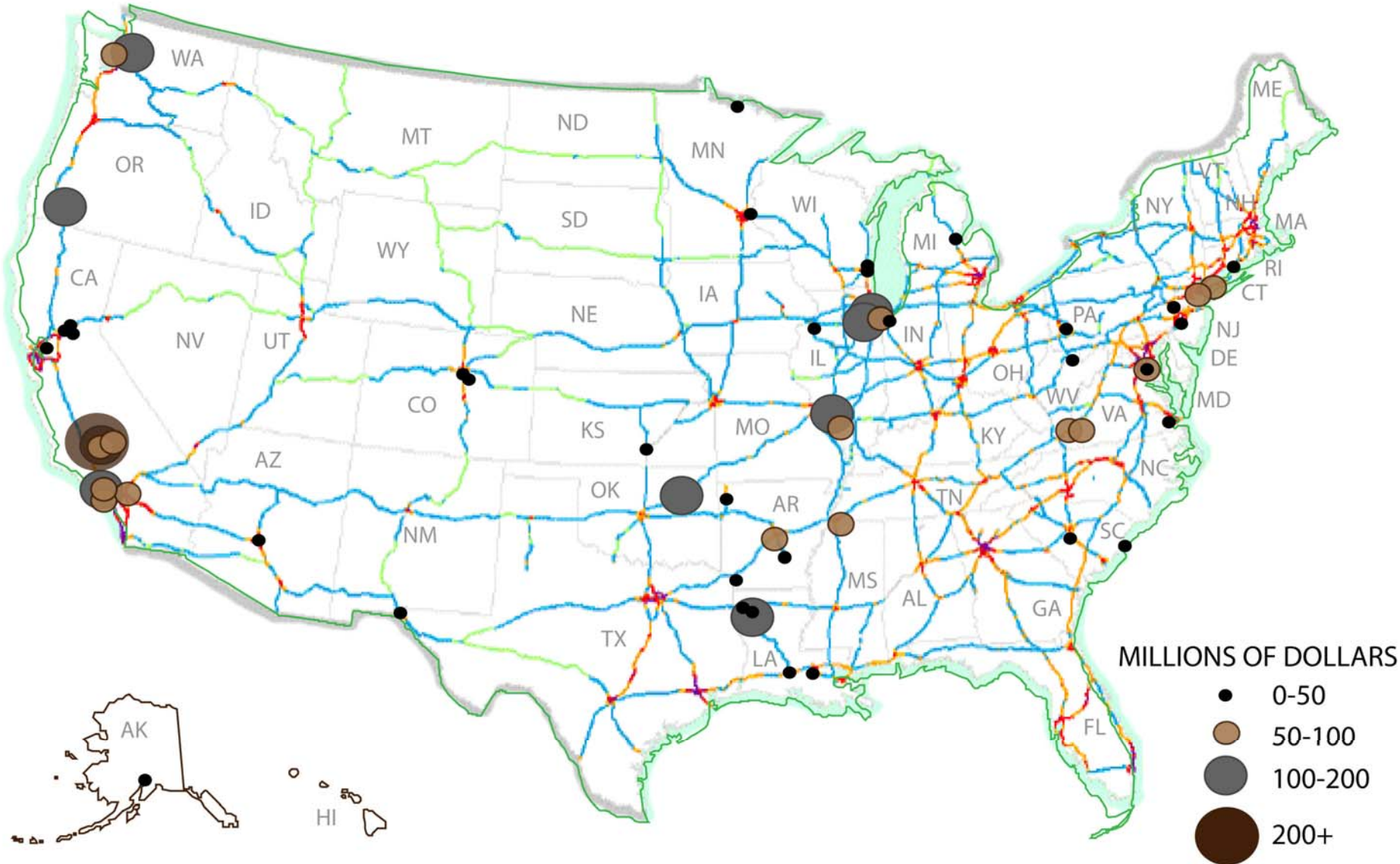
Projects of National and Regional Significance

- “(2) CRITERIA FOR GRANTS.—The Secretary may approve a grant under this section for a project only if the Secretary determines that the project—
- is justified based on the ability of the project—
 - (i) to generate national economic benefits, including creating jobs, expanding business opportunities, and impacting the gross domestic product;
 - (ii) to reduce congestion, including impacts in the State, region, and Nation;
 - (iii) to improve transportation safety, including reducing transportation accidents, injuries, and fatalities;
 - (iv) to otherwise enhance the national transportation system;”

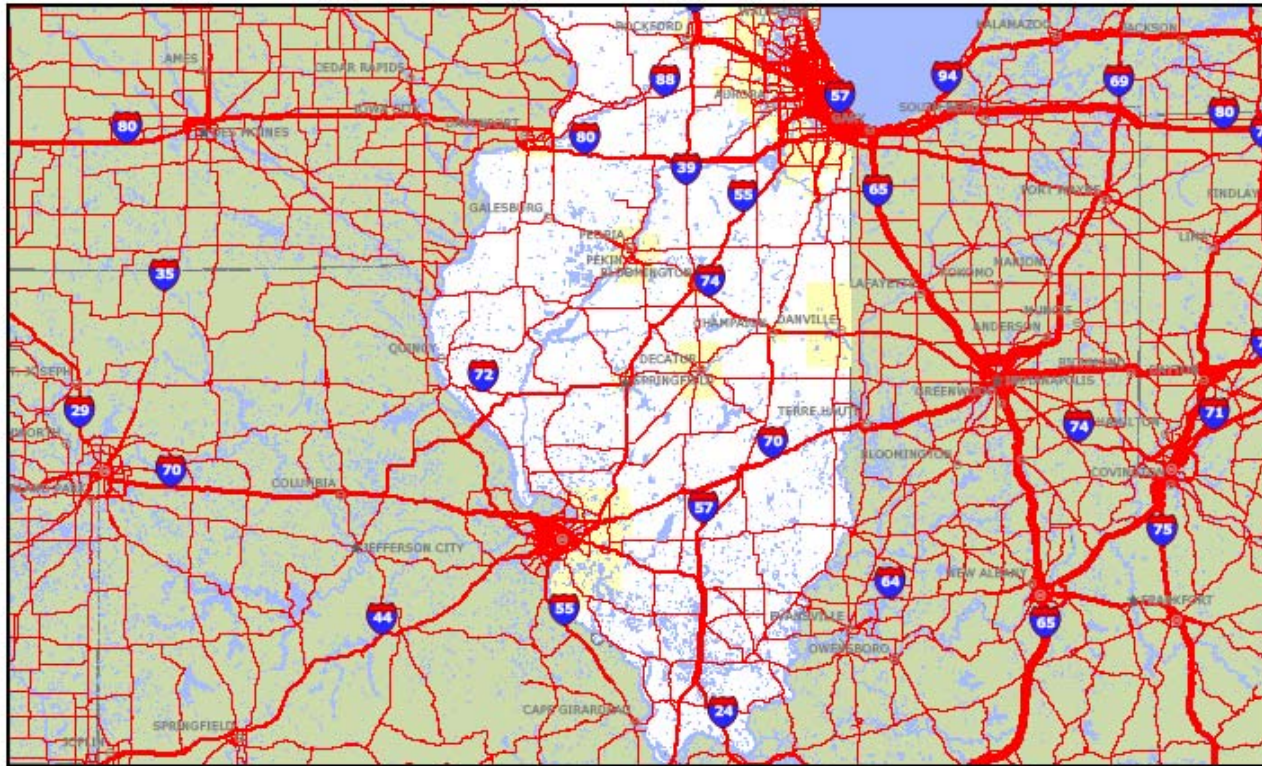
National Corridor Infrastructure Improvement Program

- “The Secretary shall establish and implement a program to make allocations to States for highway construction projects **in corridors of national significance** to promote economic growth and international or interregional trade pursuant to the selection factors provided in this section.

National Significance and Corridor Projects



Illinois - 1998



US Department of Transportation
Federal Highway Administration
Office of Freight Management and Operations
Freight Analysis Framework

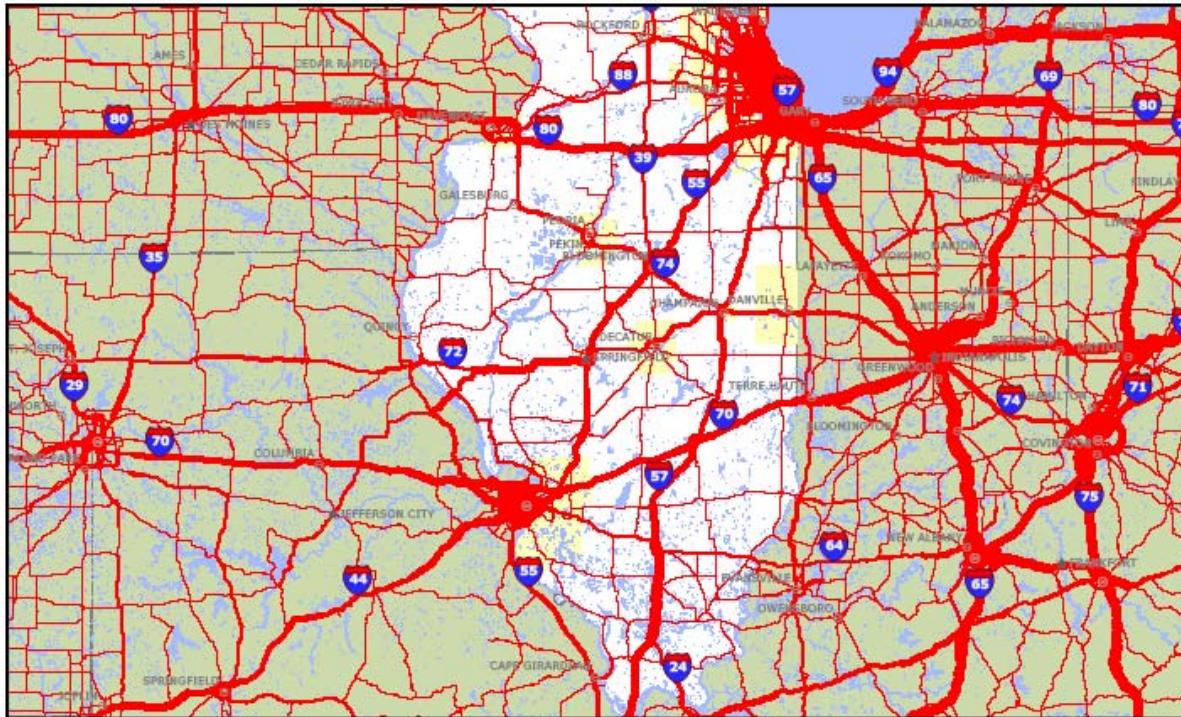
Estimated Average Annual Daily Truck Traffic: 1998

ILLINOIS

Truck Volume Scale



Illinois Projected Freight Traffic



US Department of Transportation
Federal Highway Administration
Office of Freight Management and Operations
Freight Analysis Framework

Estimated Average Annual Daily Truck Traffic: 2020

ILLINOIS

Truck Volume Scale



Local Example

- “12. IL Construction of Route 34 Interchange and improvements in Illinois \$55,000,000”
- Corridor of “national significance”?
- This project crosses the proposed north-south connector between I-80 and I-88, known as the Prairie Parkway.

Illinois Economy Depends on Sound Investments...

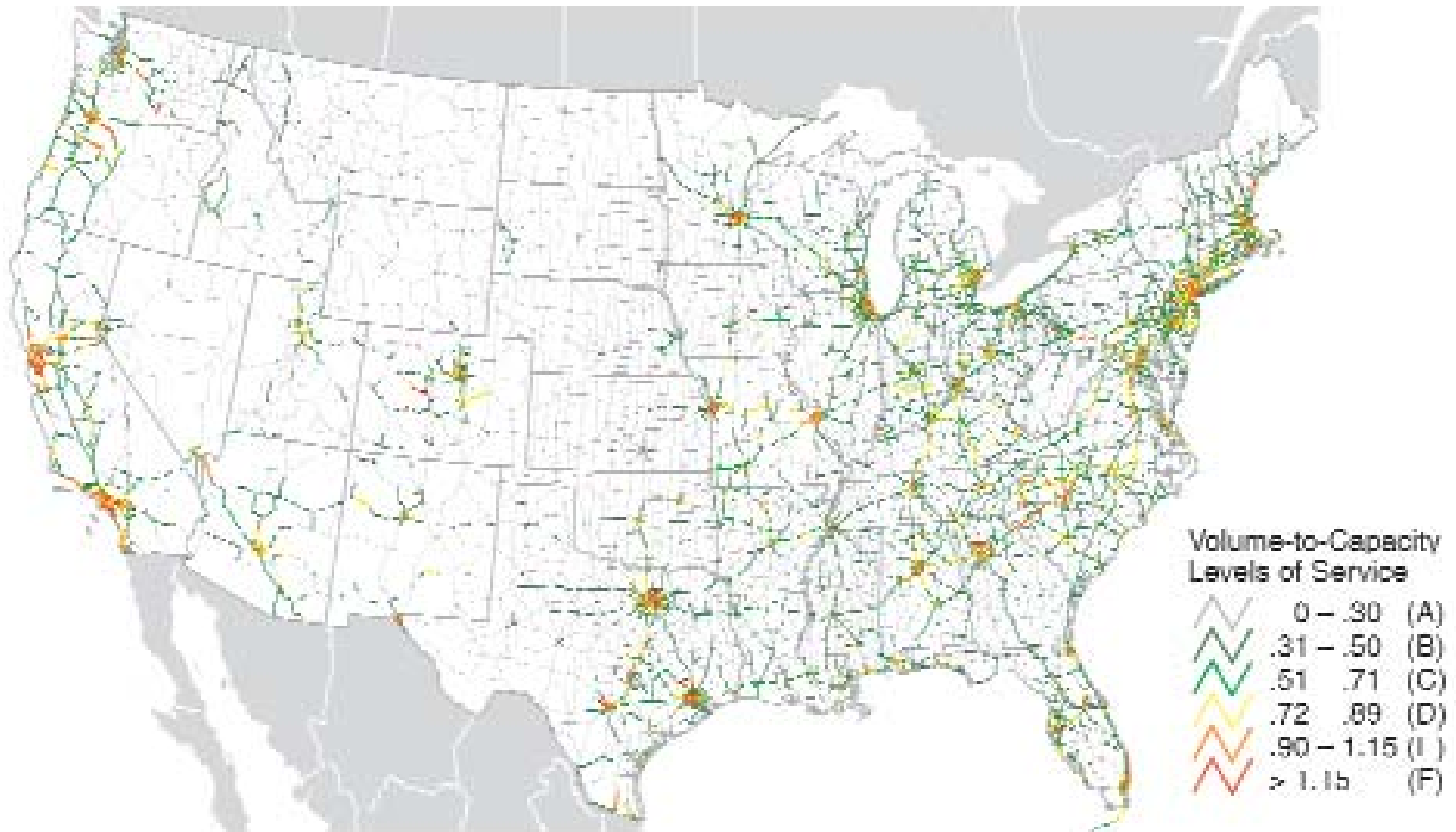
- Rail hub of North America
 - 50% of U.S. rail freight passes through Chicago's rail yards
- Chicago is a non-stop global aviation gateway to 65 international and 149 domestic business centers
- 5th Busiest Intermodal Port in the World
 - #1 in Western Hemisphere

... But Congestion Is Harming the Economy and Our Way of Life

- Cost of Congestion Estimates:
 - Texas Transportation Institute: \$4 billion
 - HDR Study commissioned by MPC: \$7.3 billion
- Freight takes two to three days to pass through the Chicago Region on both the road and rails
- Industries considering moving outside of Illinois
 - BNSF and CSX southern rail connection

Congested Highways – 2000

Source: US DOT



Potential Congested Highways – 2010

Source: US DOT



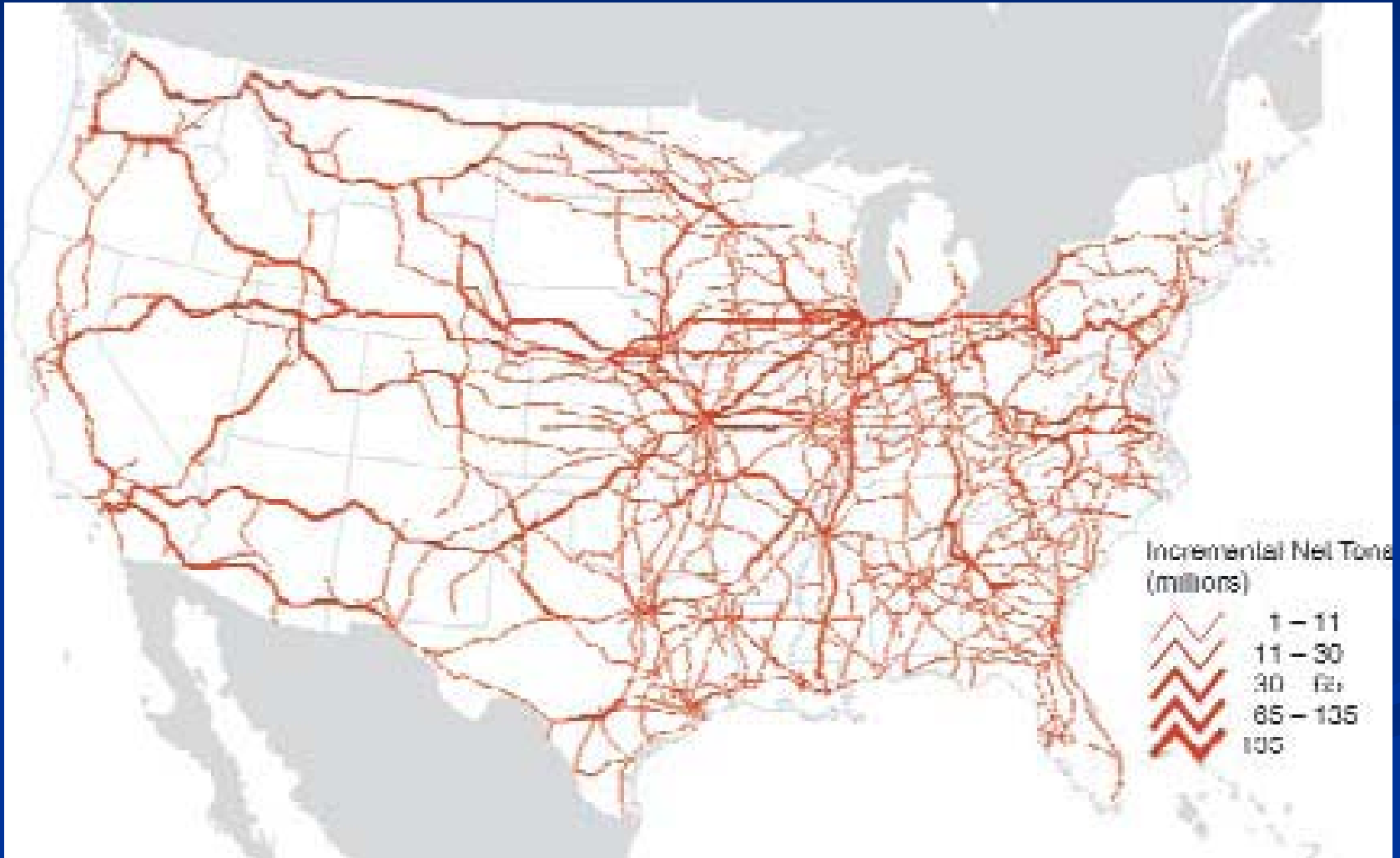
Potential Congested Highways – 2020

Source: US DOT



Incremental Rail Traffic Growth 2000-2020

Base Case



Mike McLaughlin

**Director of Regional Policy and
Transportation**

Metropolitan Planning Council

mmclaughlin@metroplanning.org

312-863-6022