

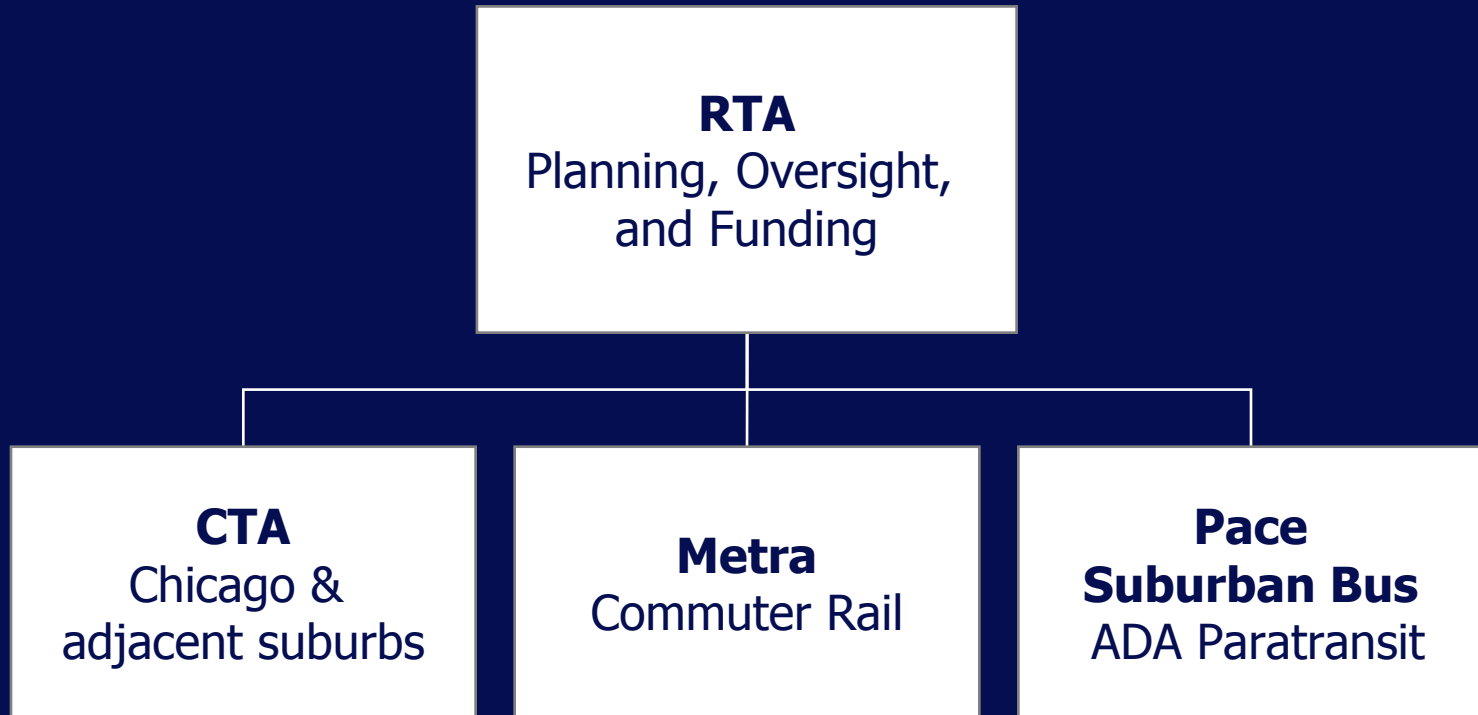


**Regional  
Transportation  
Authority**

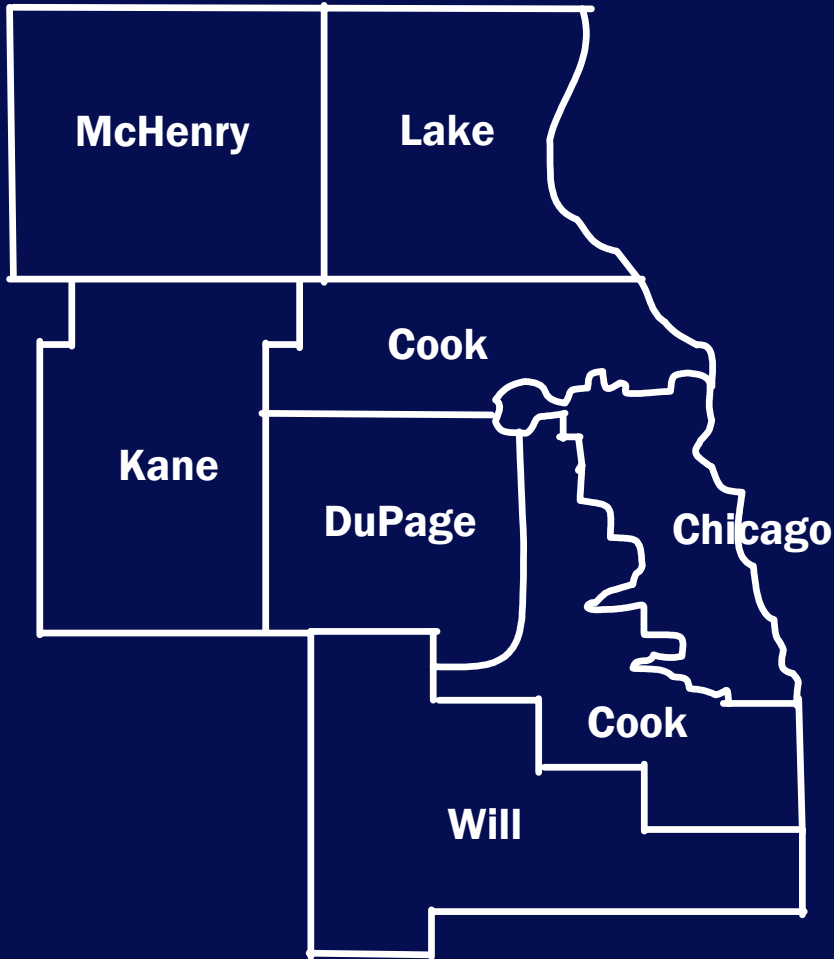
# **RTA Funding Programs and Transit-Oriented Development (TOD) Initiatives**

**Integrating Land Use and  
Transportation Planning  
CMAP / NARC Workshop  
September 11, 2008**

# Overview of RTA



# RTA Region



- 8 million people
- 3,700 square miles
- 570 million riders
- 3.6 bil. passenger miles
- 4,800 bus & rail cars
- 380 stations
- 400 routes
- 7,200 route miles
- 600 vanpool vehicles
- \$27 billion in assets

# Moving Beyond Congestion Strategic Plan



# RTA Funding Programs

- Four Coordinated Funding Programs

  - Planning Programs

    - Community Planning
    - Subregional Planning

  - Operating/Capital Programs

    - Job Access Reverse Commute / New Freedom (JARC/NF)
    - Innovation, Coordination and Enhancement (ICE)

- Annual Call for Projects

- Target projects that advance goals of Strategic Plan

# What is Transit-Oriented Development (TOD)?



- Compact
- Higher Densities
- Mixed Use
- Walkable / bikeable
- Within 1/2 mile of transit
- Regional connectivity



Photo Credit: City of Chicago

# The Strategic Plan Supports TOD

“...The RTA must act as a regional unifying force and work to ensure that transit investment encourages livability throughout the region...CMAP is committed to furthering the integration of land use and transit planning, and is therefore a natural partner for the RTA in its efforts to further TOD in the region.” (Page 59)

- Regional TOD Working Group
- TOD Action Items
- TOD Roundtable

# Regional TOD Working Group

## Members:

- CTA, Metra, Pace, MPC, CNT, IDOT-DPIT, CMAP, City of Chicago and RTA
- Established in June 2008
- Meet quarterly

## Mission:

- Discuss regional TOD initiatives
- Identify coordination needs and opportunities
- Developed eight Action Items
- Will prioritize the Action Items, and pursue implementation of the top 2-3 in 2009

# TOD Working Group Action Items

1. Metra TOD Planning at City of Chicago Stations
2. Support for CMAP 2040 Plan
3. Support for CMAP Community Technical Assistance Information Clearinghouse
4. TOD Pre-Development Funding
5. Tracking TOD Implementation
6. Marketing to TOD Developers
7. Education
8. Implementation Technical Assistance

# TOD Roundtable

- Co-Sponsored by the RTA and CMAP
- Scheduled for January 2009
- Promote TOD planning in the vicinity of transit stations and encourage collaboration with municipalities and regional agencies
- Audience: municipal planners, managers and engineers, elected officials, consulting firms



# The Strategic Plan Supports TOD

## TOD and the Regional Technical Assistance Program (RTAP)

“Northeastern Illinois has been at the forefront of TOD throughout the region. *To that end, we should expand and promote RTAP*” (Page 59).

The RTA acted on this recommendation by re-focusing RTAP with the creation of the Community Planning program. The main studies completed through this program are local level TOD plans and guidelines.



[www.rtachicago.com/cp](http://www.rtachicago.com/cp)

# RTA Goals for TOD Studies

1. Awareness of the benefits of compact, walkable, higher density mixed use development.
2. Develop a transit-oriented development plan / guide for the community and private developers to follow.
3. Develop and foster partnerships and relationships among service boards, community officials, regional agencies, private developers, residents and business owners.

# RTA TOD Planning Process

## Key Elements:

- Residential, office, and retail market analysis
- Public Participation
- Development of Concept Plans / TOD Guidelines
- Circulation and Access Plans
- Design Guidelines
- Implementation Strategies



# Completed TOD Studies

- Worked with approximately 50 communities
- Communities have been located throughout the six-county region, as well as the City of Chicago
- Policy changes seen in most communities
- Significant physical implementation in: Tinley Park, Orland Park, Elmhurst, Woodstock, Evanston, Mundelein





# Regional Transportation Authority